

# Custommea

## MEASURING GUIDE FOR CUSTOM-SIZE DOORS

### STEP 1: MEASUREMENTS

Measure each of your required cabinet doors and drawer fronts, in full millimetres. Cabinet door measurements are very precise. Do not use any rounding in your measurements.

E.g. 597mm should not be rounded up to 600mm. It should be noted as 597mm.

#### **To replace existing doors & drawers:**

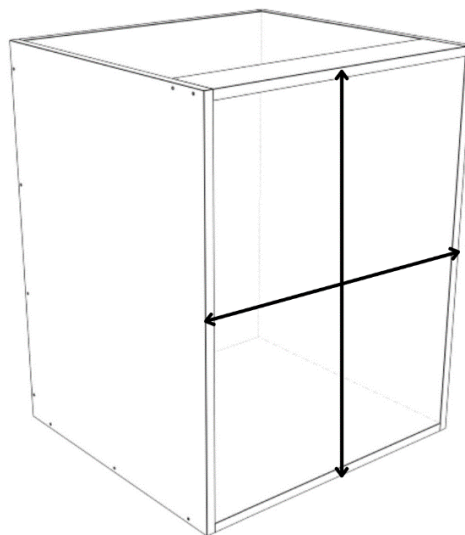
- Always measure the back side of the doors/drawers that you want to replace and take note of the exact measurement (in mm). Measure the width and the height.

#### **To buy new custom fronts from your cabinet:**

- Measure to the outside of the cabinet frame and deduct 3mm.

TIP: Typically, a door or drawer front will be 3mm shy of the cabinet width and height.

- Door example: a 600mm x 800mm cabinet frame will need a 597mm x 797mm door.
- Drawer example: a 600mm x 800mm cabinet frame with 2 drawers will need to be 597mm x 397mm each.

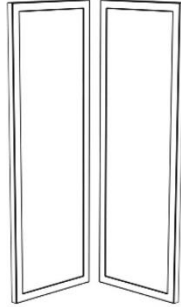


Custommea

[info@custommea.com.au](mailto:info@custommea.com.au) | [www.custommea.com.au](http://www.custommea.com.au)

**L-SHAPED CORNER DOORS** (only available undrilled, without hinges)

Please order your corner door as two separate doors, with No Hinges & Undrilled.



**STEP 2: HINGES & DRILLING**

Decide if you are purchasing hinges from us with the doors, or if you are providing/ re-using your own. If you are purchasing the hinges with the door, the door will come predrilled with soft close BLUM Hinges.

**To purchase doors with hinges & hinge holes**, select “Yes” under **Hinge & Drilling / No Hinges & Undrilled**. An extra fee will be added to your item.

**If you plan to use other/existing hinges**, select “No” under **Hinge & Drilling / No Hinges & Undrilled**. These will need to be drilled onsite by you or your contractor to ensure a seamless fit.

**IMPORTANT NOTE:** Drawers do not have the option of having holes pre-drilled. They are only available undrilled.

*Custom*mea

[info@customea.com.au](mailto:info@customea.com.au) | [www.customea.com.au](http://www.customea.com.au)